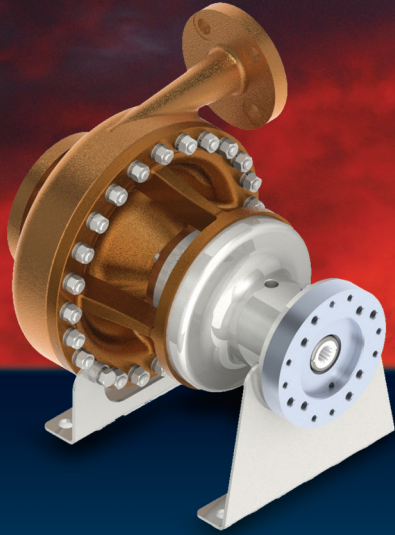




CS&P Technologies



OPERATIONAL LIMITS

- ▼ Flow range
20 - 235 gpm (76 - 890 lpm)
- ▼ Max differential head
1240 ft. (377.95 m.)
- ▼ Power rating
26 - 96 hp (19.4-71.6 kW)
- ▼ NPSHr
3 - 10 ft. (0.9 - 3 m)
- ▼ Speed range
1,500 - 5,600 rpm
- ▼ Max suction pressure
300 psi (20.7 bar)

Centrifugal Pump Series: 1.5" x 2.5" x 10"

CS&P offers a full line of premium quality centrifugal pumps. CS&P's 10" centrifugal pumps are equipped with a high performance impeller that provides a higher flow rate at a higher pressure. The pump is designed with a shaft option or with a direct mount for a hydraulic motor. It is equipped with an extended life mechanical seal. This pump is available with an oxygen cleaning option. For lower NPSH requirements, an inducer option is available.

FEATURES & BENEFITS

- ▼ Extended life, high performance mechanical seal
- ▼ High efficiency impeller design
- ▼ Stainless steel bearing housing
- ▼ Rugged shaft & bearing design for longer service life
- ▼ Bronze construction for oxygen service compatibility
- ▼ Optional inducer for low NPSH applications

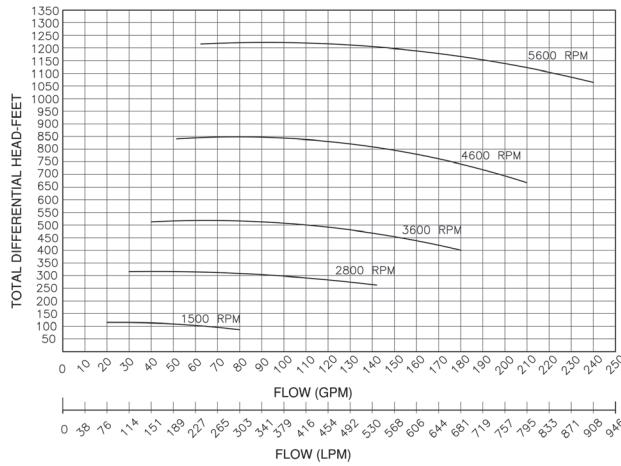
FLUIDS PUMPED

- ▼ Nitrogen
- ▼ Oxygen
- ▼ Methane (LNG)
- ▼ Argon

18119 Telge Road ▼ Cypress, Texas 77429
Office (713) 467-0869 ▼ Fax (713) 464-2089
www.csphouston.com

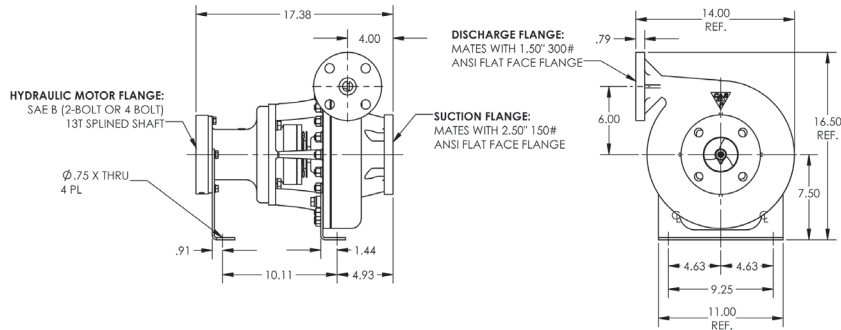
Centrifugal Pump Series: 1.5" x 2.5" x 10"

PUMP CURVE

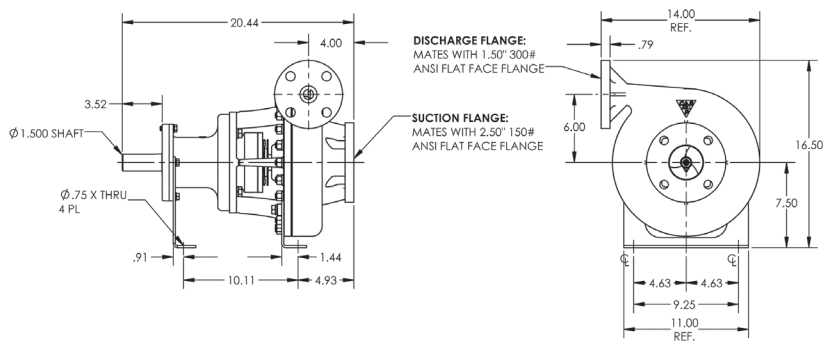


DIMENSIONS

Hydraulic Drive



Direct Drive



CS&P Technologies

CS&P Technologies
 18119 Telge Road
 Cypress, Texas 77429
 Office (713) 467-0869
 Fax (713) 464-2089

CS&P Cryogenics Canada Ltd
 Bay 130, 7491 Edgar Industrial Bend
 Red Deer, Alberta T4P 3Z5 Canada
 Office (403) 346-8240
 Fax (403) 346-8245

CS&P Criogenica de Mexico, S.A. de C. V.
 Carretera Villahermosa-Cardenas KM 5.5
 Parque Logistico Industrial Tabasco
 Villahermosa Tabasco C.P. 86103
 Office + 52 993-142-7031

(800) 262-6013 ▼ www.csphouston.com