



CS&P Technologies



180,000 SCFH Nitrogen Trailer

CS&P's 180,000 SCFH heat recovery unit is the most efficient system available in the market today. We are the OEM of the nitrogen components installed on the unit and for this reason, understand how to build the most efficient and reliable system in the industry.

CS&P's HRU is a continuous duty system and capable of delivering 3,000 SCFM at low pressure.

18119 Telge Road • Cypress, Texas 77429
Office (713) 467-0869 • Fax (713) 464-2089
www.csphouston.com

PERFORMANCE SPECIFICATIONS

- Maximum Flow Rate: 3,000 SCFM (32 GPM)
- Maximum Working Pressure:
 - 10,000 PSI with 1.625" Cold Ends
 - 15,000 PSI with 1.25" Cold Ends
- Continuous Duty Operation at 3,000 SCFM and 1,000 PSI
- Gas Discharge Temperature is 200 Degrees F at 1,000 SCFM

FLUIDS HANDLED

- Nitrogen, Oxygen, Argon, LNG

FUEL CAPACITY

- 400 gallons on the trailer

NITROGEN TANK

- Custom designed for pumping efficiencies and to minimize pump cavitation
- 100 % interchangeability

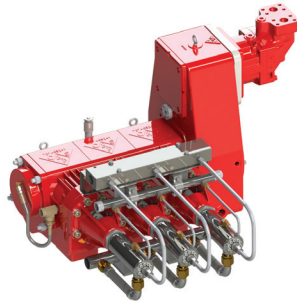
FEATURES

- Units are completely customizable based on customer's requirements
- Oversized control cabin for operator comfort
- Minimal use of flex hoses to reduce maintenance costs
- Boost pump design and placement for efficiency and extended service life
- CS&P is the OEM of cryogenic components and maintains an extensive inventory of spare parts
- Design review process that ensures customer expectations are captured and delivered

CS&P's OEM Nitrogen Components

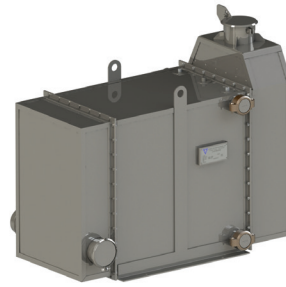
Triplex Pump

- ▼ 3-ICP-200 with Integral Gear Reduction Box
- ▼ 1.625" or 1.25" Cold Ends



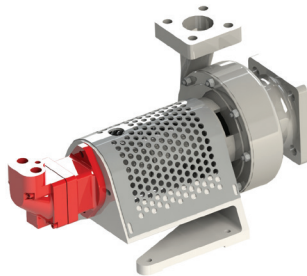
Process Water Heat Exchanger

- ▼ 180,000 SCFH



Centrifugal Pump

- ▼ 1.5" x 2.5" x 6"
- ▼ Hydraulic Motor Driven
- ▼ Option for "Sealless" Magnetic Drive

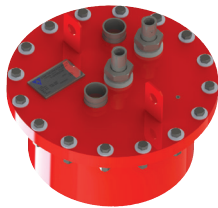


Operator's Control Panel

- ▼ Manual to Fully Automated Systems available
- ▼ CS&P's proprietary CTEC control platform
- ▼ Touch screen operation with intuitive P&ID layout
- ▼ Safety and system shutdowns for equipment reliability
- ▼ Error reporting for troubleshooting
- ▼ Data Acquisition for main and subsystems
- ▼ Downloadable data in user-friendly format
- ▼ Completely customizable and changable

Pot Vaporizer

- ▼ 180,000 SCFH
- ▼ 10,000 PSI MAWP
- ▼ Option for 15,000 PSI MAWP



CS&P Technologies

CS&P Technologies
18119 Telge Road
Cypress, Texas 77429
Office (713) 467-0869
Fax (713) 464-2089

CS&P Cryogenics Canada Ltd
Bay 130, 7491 Edgar Industrial Bend
Red Deer, Alberta T4P 3Z5 Canada
Office (403) 346-8240
Fax (403) 346-8245

CS&P Criogenica de Mexico, S.A. de C. V.
Carretera Villahermosa-Cardenas KM 5.5
Parque Logistico Industrial Tabasco
Villahermosa Tabasco C.P. 86103
Office + 52 993-142-7031

(800) 262-6013 ▼ www.csphouston.com